

Dr Agnelo Fernandes

Clinical Chair

NHS Croydon CCG

Longer, healthier lives for
all the people in Croydon



Update since last forum

- One Croydon Alliance partner have extended their partnership agreement for the next nine years and have extended the scope to all ages
- The CCG has received a “Good” overall rating with two outstanding in our annual NHS England Patient and Public Engagement assessment
- We are continuing revamped engagement with our GP community
- Developing the Southwest London Health and Care Partnership

Longer, healthier lives for
all the people in Croydon

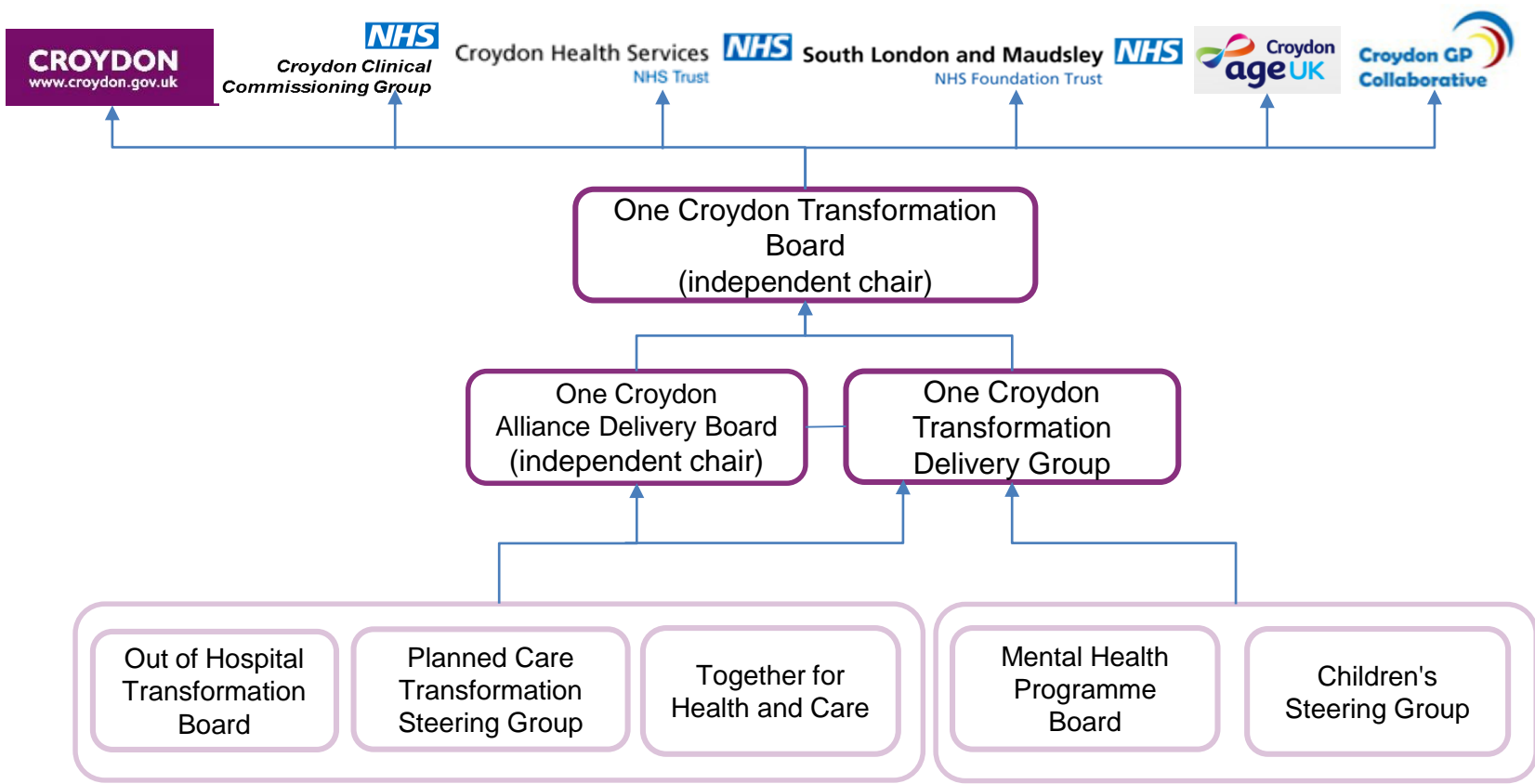


Southwest Health and Care Partnership refresh and a local approach

After talking to 5,000 local people and communities, we believe a local approach, rather than a SW London-wide approach, works best. Four local health and care partnerships have been established across:

- Croydon
- Sutton
- Merton + Wandsworth
- Kingston + Richmond





Longer, healthier lives for all the people in Croydon



The refreshed STP will focus on...

A local approach works best for planning health and care

Strengthen the focus on prevention and keeping people well – the greatest influences on our health and wellbeing are factors such as education, employment, housing, healthy habits in our communities and social connections

The best bed is your own bed – lets keep people well and out of hospital

Care is better when it is centred around a person, not an organisation. Clinicians and care workers tell us this.

Likely to mean changes to services locally - we are not proposing to close any hospitals, evolution not revolution

Involving people at local level will remain critical.

We are not closing any hospitals. We will continue to need all our hospitals though we do not think every hospital has to provide every service.

Longer, healthier lives for
all the people in Croydon



Local plans to address local issues

As a borough, this means that public sector partners from across Croydon are coming together to build on and develop our local health and care plan to address Croydon's specific needs. The plans will:

- Identify the needs of our local population together with our partners in Public Health
- Outline the joint vision and model for health and care
- Highlight the local context and challenges including any financial and clinical sustainability issues
- Set out the priorities and delivery plans to meet Croydon's needs, and address financial and clinical sustainability issues
- Set out key performance metrics and outcomes to ensure that actions have the impact intended
- Be finalised and published in November 2018



What is planned care?

- Care arranged in advance - generally follows referral from your GP

Why is change needed?

- Growing and ageing population = increased NHS demand
- Sometimes people wait too long for treatment
- Care could be more joined up and closer to home
- Not everyone has an equal chance of living a healthy, happy life

Longer, healthier lives for
all the people in Croydon





More self care support

- Raising awareness with staff and residents through community engagement
- Health Help Now - one app and website for self care and service advice



Making better use of digital technology

- Advice and guidance - easier communication between GPs and specialists to share expertise



Health coaching and group consultations

- Group consultations - a sustainable alternative to one-to-one consultations, peer support and building confidence to self care



More care closer to home

- Different professionals working within primary care: MSK - physiotherapists
- Community based clinics - faster, direct access to the right professionals



More joined up services

- Consultants and other professionals working closely with primary care
- Better experience for patients and carers from joined up services



Tonight we hope you will...

- Listen to the plans
- Ask questions
- Give your views
- Get involved – join a procurement/commissioning panel

Longer, healthier lives for
all the people in Croydon

